



USF Chemistry NEWS

News of Interest to
Friends of the Department of Chemistry
University of South Florida

Volume 15, No 5
Late Autumn, 2017

News and feedback

The stellar NF support reported in the last issue continued:

s arc support. I

Dr. **Julie Harmon** (Co-PI with Dr. Jing Wang, Engineering): MRI: Acquisition of a Multi-Material Additive Manufacturing Platform for Multi-Disciplinary Research and Education (NSF MRI) \$420,980

(9/18/2017-10/31/18) 526 (1ue)3.869d9 (W)0238TJ 1 1m7(7)0.(446 5a)32nue65-4.-4t) Tf 13.5(y)19. 7-2nue65- W 1

This is the second year for such an honor for Dr. Ma as was noted in the *News* last year.

Dr. Ma also serves as Director of SMAARTT.

Faculty recognition -II

Dr. **Solomon Weldegirma** and Dr. **Kimberly Fields** were named GCP Global Faculty Fellows for the Fall 2017. Both will be associated on a project involving Organic Chemistry laboratory (I and II). Both are instructors and each will receive a bonus for working on their individual laboratory project.

For 2010, Cheryl was the recipient of a USF

nstoppab Ca pa gn updat

The goal to raise \$1 billion in donations was exceeded a year early and with more money, \$1.035 billion.

The Celebration was held November 11th at Amalie Arena, Channelside Drive, with about 800 guests. Funds for the occasion came from donations and table charges. Past and current Campaign chairs (2006-2017) were recognized as were the significant donors.

Entertainment was provided by KC and thye Sunshine Band. Over the past 40 years their songs have ben heard in over 200 movies and commercials. They have a star on the Hollywood Walk of famer

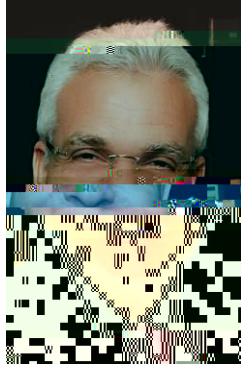
A new donation of \$15 million by Pam and Les Muma was announced.

About Ir a

USF was closed for six days because of Hurricane Irma. Students were allowed to remain in the residence halls and food service was provided.

Those who were unable to return home including students and staff from USF-SP and USF-SM, were housed and fed in the residence halls where President **Judy Genshaft** and Provost **Ralph Wilcox** visited regularly.

USF also housed at the Sundome Corral more than 400 utilities3w(10k1)5thrs)21sthpas



Dr.Sanberg

The eletter was written in response to Science article, “ The dual frontier: Patented inventions and prior scientific inventions.” By Mohammad Ahmadpoor and Benjamin F. Jones. The article notes that most cited research articles (80%) link forward to a future patent ... most patents (61%) link backward to a prior research article.’

USF-Tampa Campus statistics

| | |
|-------------------------------|-------------------|
| Students | 43,502 |
| Faculty and Staff | 15,378 |
| Instructional Faculty | 1,806 |
| Buildings | |
| System | 256 |
| Student: Faculty ratio | 24:1 (2015) |
| | 21:1 (2016, fall) |
| Operating Budget | \$1.7 B (2017-18) |

b ast r: Mr.