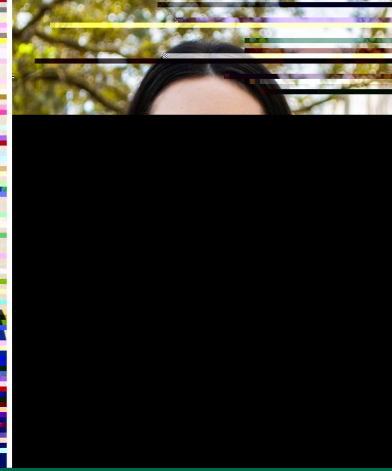
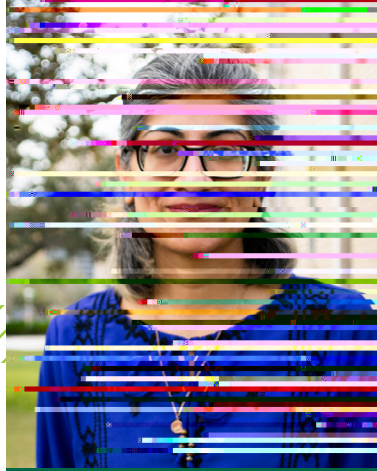




Newsletter for the
February 2022

Newsletter
Office of Administrative Services



EMPLOYEE PROFILES

TANEEM ALI-QURESHI

BUSINESS CENTER

Taneem Ali-Qureshi is a Business Center Analyst in the Business Center. She has been with the University of South Florida for 10 years. She is currently working on her Master's degree in Business Administration.

Taneem is a member of the American Management Association (AMA) and the International Brotherhood of Teamsters (IBT). She is also a member of the University of South Florida's Employee Union.

Taneem is a professional and dedicated employee who is committed to providing excellent customer service. She is a team player and is always willing to help her colleagues.

Taneem is a hardworking and detail-oriented professional who is committed to providing excellent customer service. She is a team player and is always willing to help her colleagues.

Taneem is a professional and dedicated employee who is committed to providing excellent customer service. She is a team player and is always willing to help her colleagues.

Taneem is a hardworking and detail-oriented professional who is committed to providing excellent customer service. She is a team player and is always willing to help her colleagues.

SARAH GRECNI

BUSINESS CENTER

Sarah Grecni is a Business Center Analyst in the Business Center. She has been with the University of South Florida for 6 years. She is currently working on her Master's degree in Business Administration.

Sarah is a member of the American Management Association (AMA) and the International Brotherhood of Teamsters (IBT). She is also a member of the University of South Florida's Employee Union.

Sarah is a professional and dedicated employee who is committed to providing excellent customer service. She is a team player and is always willing to help her colleagues.

Sarah is a hardworking and detail-oriented professional who is committed to providing excellent customer service. She is a team player and is always willing to help her colleagues.

Sarah is a professional and dedicated employee who is committed to providing excellent customer service. She is a team player and is always willing to help her colleagues.

Sarah is a hardworking and detail-oriented professional who is committed to providing excellent customer service. She is a team player and is always willing to help her colleagues.

SAFETY TRAINING PROGRAM

Environmental Health and Safety recently streamlined their training program and began offering most courses online. Take this assessment to determine the required trainings for your role at USF.

[Click here to take the assessment](#)

